

# HotDocs THE DOCUMENT AUTOMATION SOFTWARE

## HOTDOCS PROFESSIONAL 6 FEATURES AND SYSTEM REQUIREMENTS

HotDocs® Professional is the development tool of the HotDocs product range. It includes all the features of HotDocs User, plus:

### ADVANCED AUTOMATION

**Intelligent Dialogues.** Control the appearance of dialogues (different styles, multiple columns). Attach a script to a dialogue to conditionally hide or grey out questions or make questions mandatory.

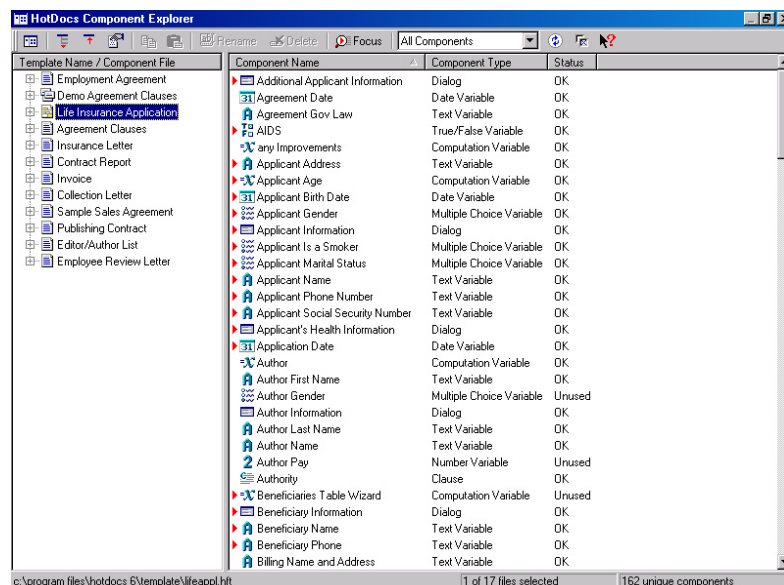
**Lists within Lists.** Repeat instructions can be nested. For example, list creditors' names with a list of the amounts owed listed under each creditor name. Nest repeats up to four levels deep.

**Post-Assembly Macros.** Attach Microsoft® Word or WordPerfect® macros to HotDocs document templates to execute additional instructions in the word processor.

**Detailed Help Resources for Users.** Specify an existing HTML Help (.CHM) file as a source file when assigning Help to a variable or a dialogue. Attach detailed help references, help files and HTML pages to dialogues.

### EDITING FEATURES

**Component Explorer.** Manage components across a large number of component files. View component usage, remove unused component files, re-name components, and copy and paste components with a clear understanding of the implications of the change across component files.



*Manage components across a library of forms using the all-new Component Explorer*



'Its about time'

Capsoft UK Ltd. T: 0870 606 6050

E: info@hotdocs.co.uk W: www.hotdocs.co.uk

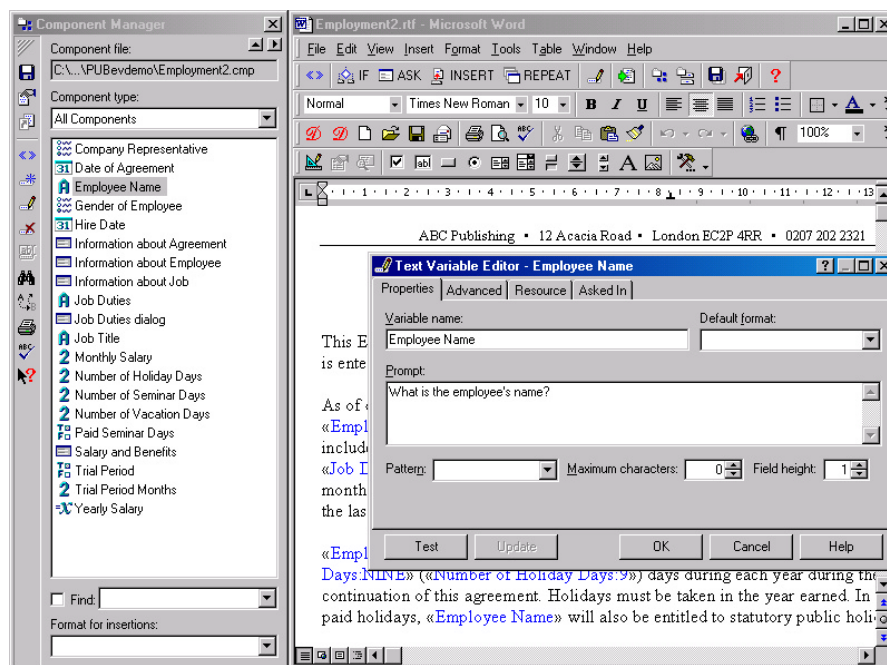
# HotDocs THE DOCUMENT AUTOMATION SOFTWARE

**Component Manager.** Manage, edit and create components, variables and dialogues within a dialogue box that can be viewed next to the template window; work in the two different windows simultaneously. Edit unlimited numbers of components, and drag-and-drop variables into templates.

**Print Libraries, Component Lists and Components.** Print the properties of the entire library or a selected item displayed in the HotDocs library window. Maintain a record of components so that future components are created consistently.

**Spell Check.** Spell check prompts, merge text, help text and more. Add words to a personal dictionary.

**Simultaneously Test and Edit Variables, Dialogues and Scripts.** Simultaneously test and edit components within a template.



*The enhanced Component Manager allows new levels of control in template design, automation and publishing*

## GRAPHICAL FORM AUTOMATION

**HotDocs Automator.** Convert forms to HotDocs graphical form templates. Create HotDocs variables and overlay editable fields. Use HotDocs Filler, also included in HotDocs Standard Edition, to fill and assemble graphical form templates.

**PDF Form Creation and Automation.** Use HotDocs PDF Advantage along with HotDocs Professional to automate, edit and save PDF graphical forms. All functionality available in HotDocs Automator is included.

**Form Wizards and Field Wizards.** Attach Form Wizards to create answer-gathering dialogues. Attach Field Wizards to provide help for users, such as pop-up tables or pick lists.



' Its about time '

Capsoft UK Ltd. T: 0870 606 6050

E: info@hotdocs.co.uk W: www.hotdocs.co.uk

 THE DOCUMENT  
AUTOMATION SOFTWARE

## PUBLISHING FEATURES

**Create Templates for HotDocs Online.** Create, test and publish templates that can be assembled on a Web server with HotDocs Online Server.

**Server-Based Assembly.** Create auto-assemble (.HDA) files and auto-install (.HDI) files that can be placed on the Internet, company intranet or network server and referenced in the HotDocs library with a URL. Auto-assemble files are compressed files that contain a template and related files. An auto-install file is a compressed file consisting of a library and one or more templates and their related files.

**Upload Answer Data.** Upload XML or Binary Answer Data. Specify that certain templates gather the data entered by users, and upload it to a designated URL. The data may be warehoused, analyzed or used to produce a duplicate document or form. Uploaded answers are formatted as if they had been entered on a standard HTML form.

## SYSTEM REQUIREMENTS

IBM Compatible PC, Pentium 233 MHZ or higher processor, 64 MB RAM (minimum)

Pentium 500 MHz or higher processor, 256 MB RAM (recommended)

30 MB hard disk storage

Microsoft Windows 95, 98, ME, NT, 2000 or XP

Microsoft Internet Explorer 4.0+

Microsoft Word® 97, 2000 or XP or Corel® WordPerfect® 10.0, 9.0 or 8.0

© Capsoft UK Limited 2002. Portions © 2002 LexisNexis, a division of Reed Elsevier Inc.

HotDocs is a registered trademark of Matthew Bender & Company, Inc. Microsoft and Windows are registered trademarks of Microsoft Corporation. WordPerfect is a registered trademark of Corel Corporation. Other products or services may be trademarks or registered trademarks of their respective companies.



' Its about time '

Capsoft UK Ltd. T: 0870 606 6050

E: [info@hotdocs.co.uk](mailto:info@hotdocs.co.uk) W: [www.hotdocs.co.uk](http://www.hotdocs.co.uk)